

**Application:**

The Kit Oven (KWN) is used primarily for drying water from parts and for curing liquid or powder-based coatings. It can also be used for other heating applications with maximum temperature ratings up to 500° F, where vertical-down airflow is effective.

Description:

The KWN is a cost-effective alternative to our standard SWN walk-in batch oven line. It is designed and manufactured to be shipped as a kit, where the customer assembles the oven body and installs the main components at the final job site which reduces up front costs. The control panel and gas train, as well as the doors, are factory assembled prior to shipment. Each KWN features top-down air flow, with supply ducts located along each side of the chamber for air distribution along the length of the chamber.

Lead times range between 4-6 weeks, but expedited shipments may be available upon request. A 2-3 person crew can assemble the oven and have it operational in 4-6 days.

Other Standard Features:

- Airflow pressure switches on all blowers
- Aluminized interior and exterior sheet metal
- 4" thick, 6# density, semi-rigid batt insulation
- Heavy duty doors with ball bearing hinges
- Door limit switch to shut the burner to low fire when the doors begin to open
- Motorized (modulating) gas control valve
- Digital controller & separate high limit
- Powered exhaust blower
- 480/3/60 power supply (other voltages available)
- FM, GE GAP, IRI, NFPA, NEC compliant

Options:

- Programmable controllers and chart recorders
- Process timers (auto shut-down and/or start-up)
- Main power disconnect switch
- Doors at both ends
- Shipped pre-assembled
- Assembly assistance at your facility (turnkey or a working supervisor)



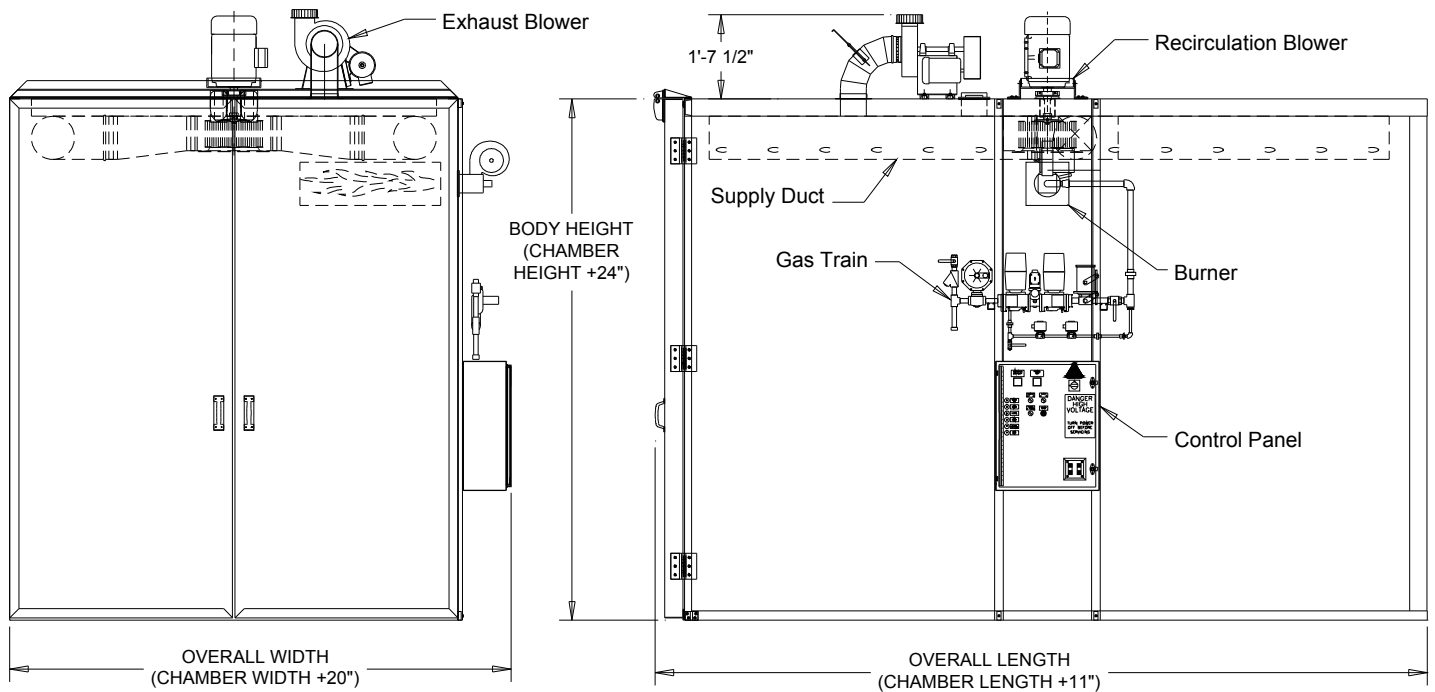
Wisconsin Oven Corporation

2675 Main Street • PO Box 873 • East Troy, WI 53120 USA

www.wisoven.com • sales@wisoven.com • (262)642-3938 Phone • (262)363-4018 Fax

KWN SERIES

Walk-In Kit Oven



Model	Chamber				Blowers & Burner Ratings			
	Width	Length	Height	Cubic Feet	Recirculation (CFM x 100)	Horsepower	Burner Rating BTU's x 1,000	Exhaust Blower
KWN-66-6G	6	6	6	216	34	3	350	400 CFM 1/2 HP
KWN-610-6G	6	10	6	360	45	5	400	400 CFM 1/2 HP
KWN-616-6G	6	16	6	576	70	7.5	500	400 CFM 1/2 HP
KWN-810-8G	8	10	8	640	70	7.5	600	620 CFM 1/2 HP
KWN-816-8G	8	16	8	1,024	70	7.5	750	620 CFM 1/2 HP
KWN-820-8G	8	20	8	1,280	140	15	800	1,000 CFM 1-1/2 HP
KWN-824-8G	8	24	8	1,536	140	15	900	1,000 CFM 1-1/2 HP



Wisconsin Oven Corporation

2675 Main Street • PO Box 873 • East Troy, WI 53120 USA

www.wisoven.com • sales@wisoven.com • (262)642-3938 Phone • (262)363-4018 Fax