

WISCONSIN OVEN CORP.

EAST TROY, WISCONSIN 53120

GENERAL ASSEMBLY

Ferris Wheel/E7.5

REV.
A

DRAWN BY
JBK

DATE

DWG. NO.

CHK'D BY

DATE

SCALE

JOB NO

SPECIFICATIONS:

ELECTRICAL: 480V/3PH/60Hz APPROX. 235 AMPS

HEAT INPUT: 168 KW

RECIRCULATION: 25,000 CFM @ 20 HP

EXHAUST: 1,900 CFM @ 1 1/2 HP

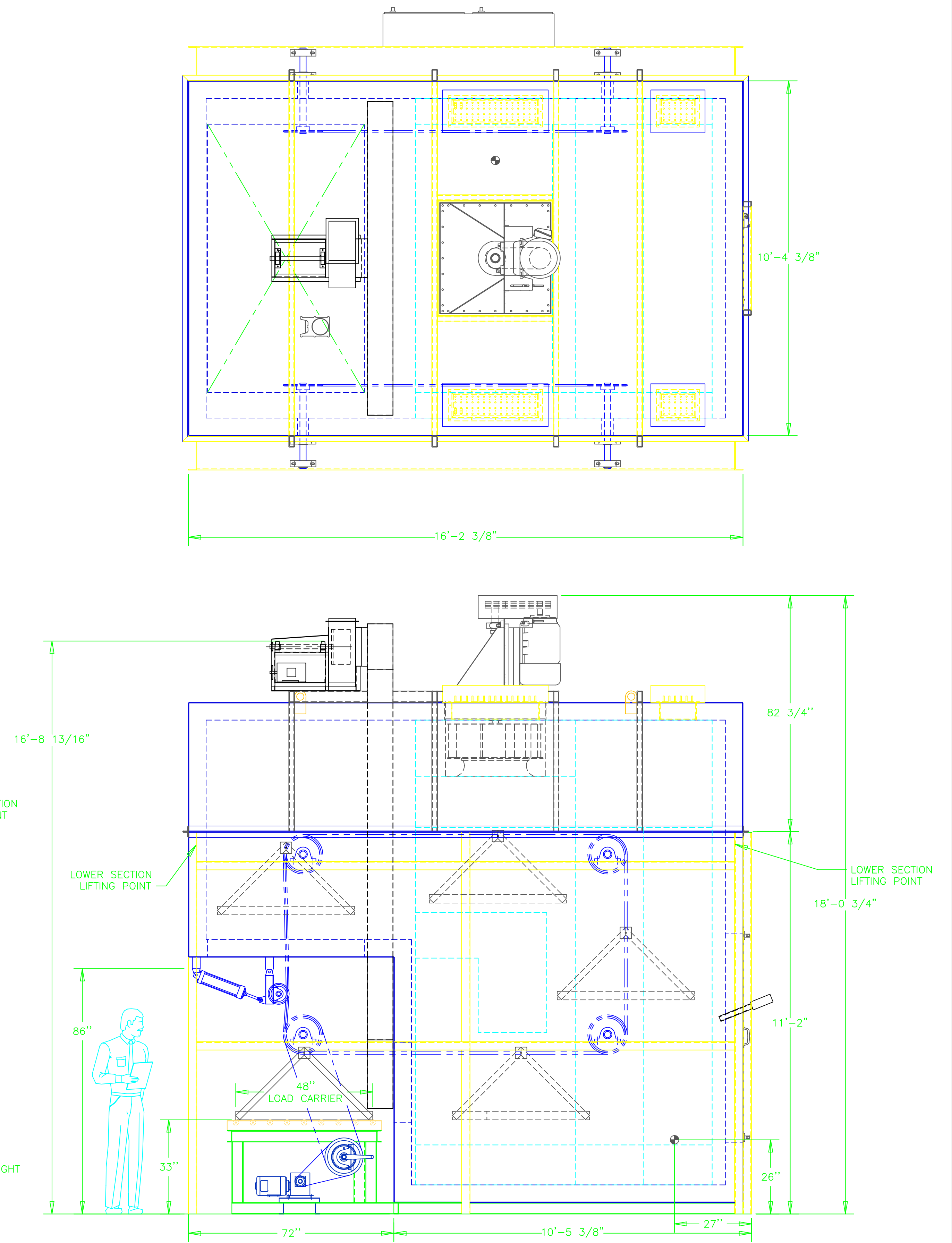
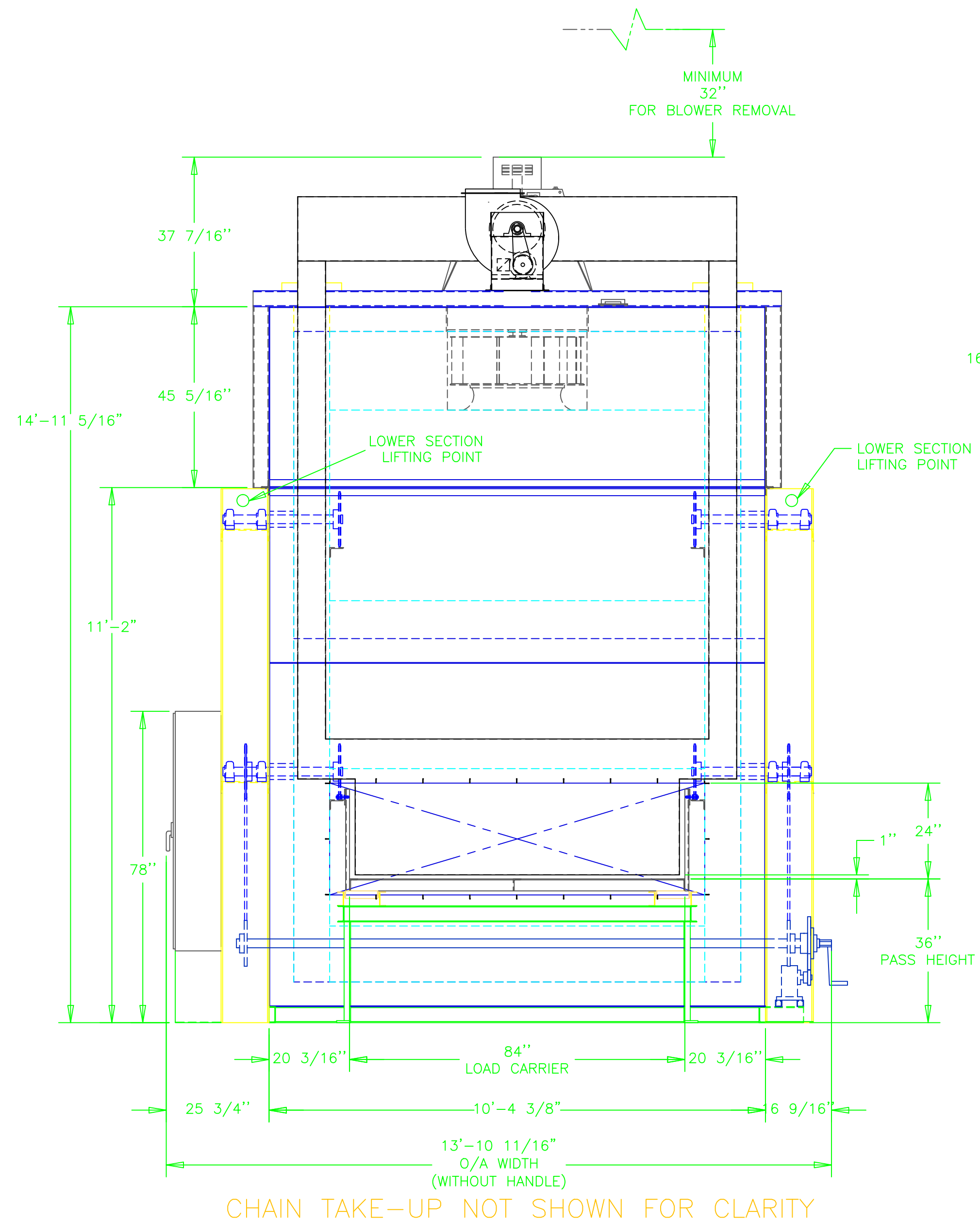
TEMPERATURE: 400°C MAXIMUM
180°C NORMAL

COMPRESSED AIR: 80 PSI

CONVEYOR: 25 FT/MIN

PAINT COLOR: OVEN—WHITE
CONTROL PANEL—WHITE
PIPING— NOT PAINTED
CONDUIT— NOT PAINTED
GUARDS— OSHA YELLOW

- NOTES:**
1. LOGO TO BE WOC LARGE LOCATED ON CENTERLINE OF OVEN ABOVE PROFILE OPENING
 2. THIS OVEN IS NOT RATED FOR CLASS "A" OPERATION
 3. TEMPERATURE UNIFORMITY: ±10°C @ 180°C
 4. APPROXIMATE SHIPPING WEIGHT: TOP 11,300 lbs
BOTTOM 22,500 lbs
 5. OVEN SPLIT FOR SHIPPING
 6. PROFILE AROUND OPENINGS
 7. USE SPREADER BAR TO LIFT OVEN SECTIONS



THIS DRAWING, INCLUDING THE PRINCIPLE OF DESIGN, IS THE PROPERTY OF AND IS SUBMITTED BY WISCONSIN OVEN CORPORATION WITH THE AGREEMENT THAT IT IS NOT TO BE REPRODUCED, COPIED, OR LOANED, IN PART OR WHOLE. IT IS NOT TO BE USED IN ANY MANNER THAT MAY CONSTITUTE A DETRIMENT DIRECTLY OR INDIRECTLY TO WISCONSIN OVEN CORP. ACCEPTANCE OF THIS DRAWING WILL BE CONSTRUED AS AN AGREEMENT TO THE ABOVE.